

# RAZORBACK ROAD PARKING GARAGE



Concept Pricing  
Package  
April 23, 2026

Breezeway Option



**Gensler**



SHEET NOTES

UNIVERSITY OF  
ARKANSAS

68 S RAZORBACK RD, FAYETTEVILLE,  
ARKANSAS 72701, UNITED STATES



UNIVERSITY OF  
ARKANSAS

Gensler

5005 Greenville Avenue  
Dallas, TX 75206  
United States

Tel: 214.273.1500  
Fax: 214.273.1505

GENERAL NOTES

- A. RE: G0 SHEET SERIES FOR LEGENDS, SYMBOLS AND ABBREVIATIONS.
- B. RE: G1 SHEET SERIES FOR CODE ANALYSIS RELATED TO PROJECT.
- C. ALL PARTITIONS TO BE TYPE "XXX" UNO. ALL FURRED-OUT PARTITIONS TO BE TYPE "XXX" UNO. RE: A0.300 SERIES FOR PARTITION TYPES AND DETAILS.
- D. DOOR NUMBERS ARE THE SAME AS THE ROOM INTO WHICH THEY SWING. MULTIPLE DOORS INTO A SINGLE ROOM HAVE AN ALPHABETICAL DESIGNATION. RE: A0.400 FOR DOOR SCHEDULE AND TYPES.
- E. ALL PARTITIONS AT THE WINDOW WALL ARE CENTERED ON EITHER COLUMNS OR WINDOW MULLIONS UNO.
- F. COORDINATE AND PROVIDE BLOCKING FOR MILLWORK AND ITEMS ATTACHED OR MOUNTED TO PARTITIONS OR CEILINGS.
- G. PARTITIONS ARE DIMENSIONED FROM FINISH FACE TO FINISH FACE UNO. MAINTAIN DIMENSIONS MARKED "CLEAR". ALLOW FOR THICKNESSES AND MOUNTING OF FINISHES.

Date	Description
------	-------------

Seal / Signature

**PRELIMINARY**  
THESE DOCUMENTS ARE INCOMPLETE, AND ARE RELEASED FOR  
INTERIM REVIEW ONLY AND ARE NOT INTENDED FOR REGULATORY  
APPROVAL, PERMIT, OR CONSTRUCTION PURPOSES.  
ARCHITECT'S NAME  
ARKANSAS REGISTERED ARCHITECT: LICENSE #  
XXXXXXX  
01/23/23

Project Name

RAZORBACK ROAD  
PARKING GARAGE

Project Number

122.0144.000

Description

CONSTRUCTION PLAN - LEVEL 01 -  
BREEZEWAY

Scale

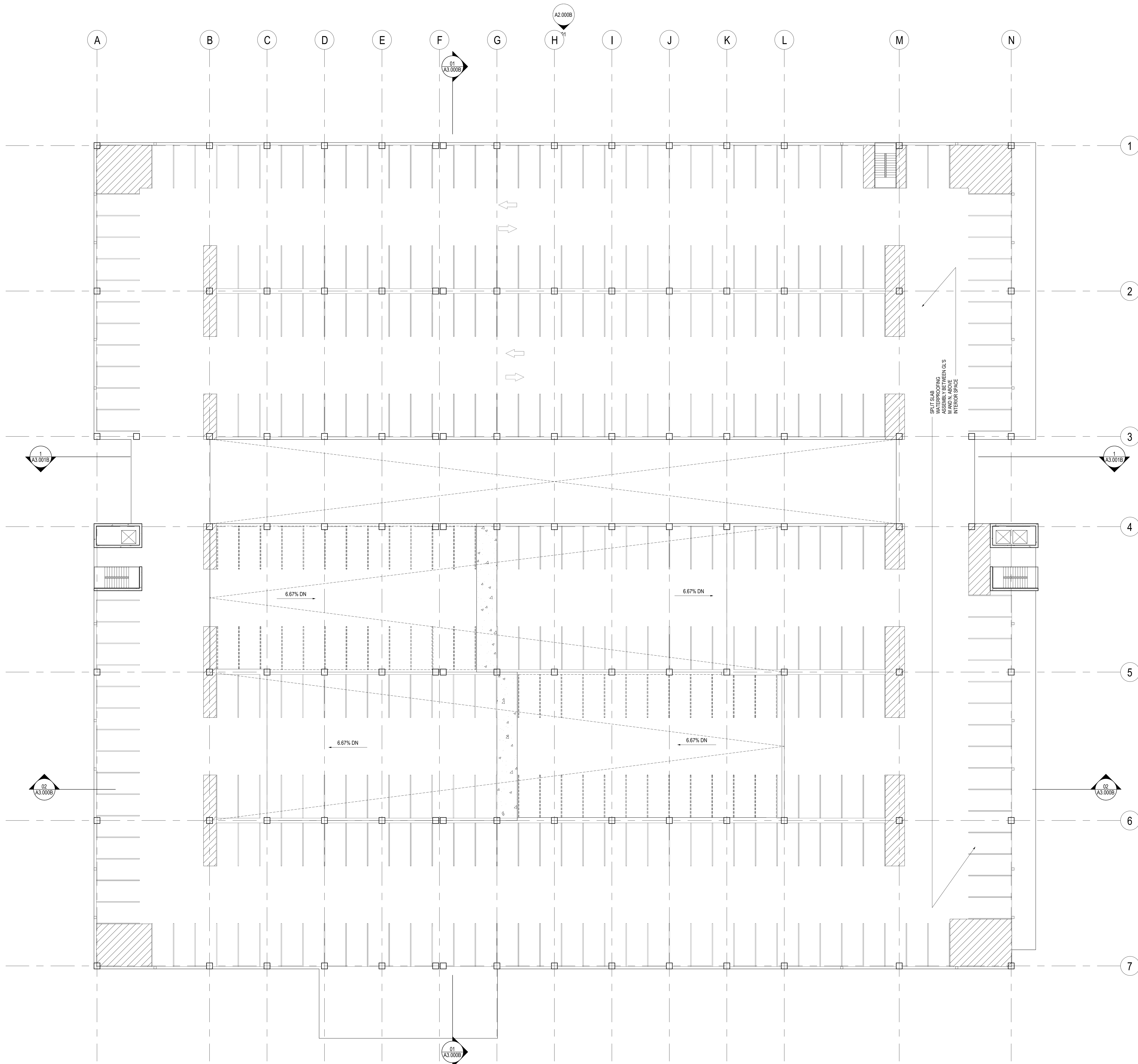
As indicated

Ref North



A1.101B

KEY PLAN



SHEET NOTES

**UNIVERSITY OF ARKANSAS**  
68 S RAZORBACK RD, FAYETTEVILLE, ARKANSAS 72701, UNITED STATES

  
UNIVERSITY OF ARKANSAS

**Gensler**  
5005 Greenville Avenue  
Dallas, TX 75206  
United States

Tel: 214.273.1500  
Fax: 214.273.1505

GENERAL NOTES

- A. RE: G0 SHEET SERIES FOR LEGENDS, SYMBOLS AND ABBREVIATIONS.
- B. RE: G1 SHEET SERIES FOR CODE ANALYSIS RELATED TO PROJECT.
- C. ALL PARTITIONS TO BE TYPE "XXX" UNO. ALL FLURRED-OUT PARTITIONS TO BE TYPE "XXX" UNO. RE: A0.300 SERIES FOR PARTITION TYPES AND DETAILS.
- D. DOOR NUMBERS ARE THE SAME AS THE ROOM INTO WHICH THEY SWING. MULTIPLE DOORS INTO A SINGLE ROOM HAVE AN ALPHABETICAL DESIGNATION. RE: A0.400 FOR DOOR SCHEDULE AND TYPES.
- E. ALL PARTITIONS AT THE WINDOW WALL ARE CENTERED ON EITHER COLUMNS OR WINDOW MULLIONS UNO.
- F. COORDINATE AND PROVIDE BLOCKING FOR MILLWORK AND ITEMS ATTACHED OR MOUNTED TO PARTITIONS OR CEILINGS.
- G. PARTITIONS ARE DIMENSIONED FROM FINISH FACE TO FINISH FACE UNO. MAINTAIN DIMENSIONS MARKED "CLEAR". ALLOW FOR THICKNESSES AND MOUNTING OF FINISHES.

Date	Description
------	-------------

Seal / Signature

**PRELIMINARY**  
THESE DOCUMENTS ARE INCOMPLETE, AND ARE RELEASED FOR INTERIM REVIEW ONLY. THEY ARE NOT INTENDED FOR REGULATORY APPROVAL, PERMIT, OR CONSTRUCTION PURPOSES.

ARCHITECT'S NAME  
ARKANSAS REGISTERED ARCHITECT: LICENSE #  
XXXXXXXXXX

01/23/23

Project Name

RAZORBACK ROAD  
PARKING GARAGE

Project Number

122.0144.000

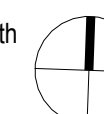
Description

CONSTRUCTION PLAN - LEVEL 02 -  
BREEZEWAY

Scale

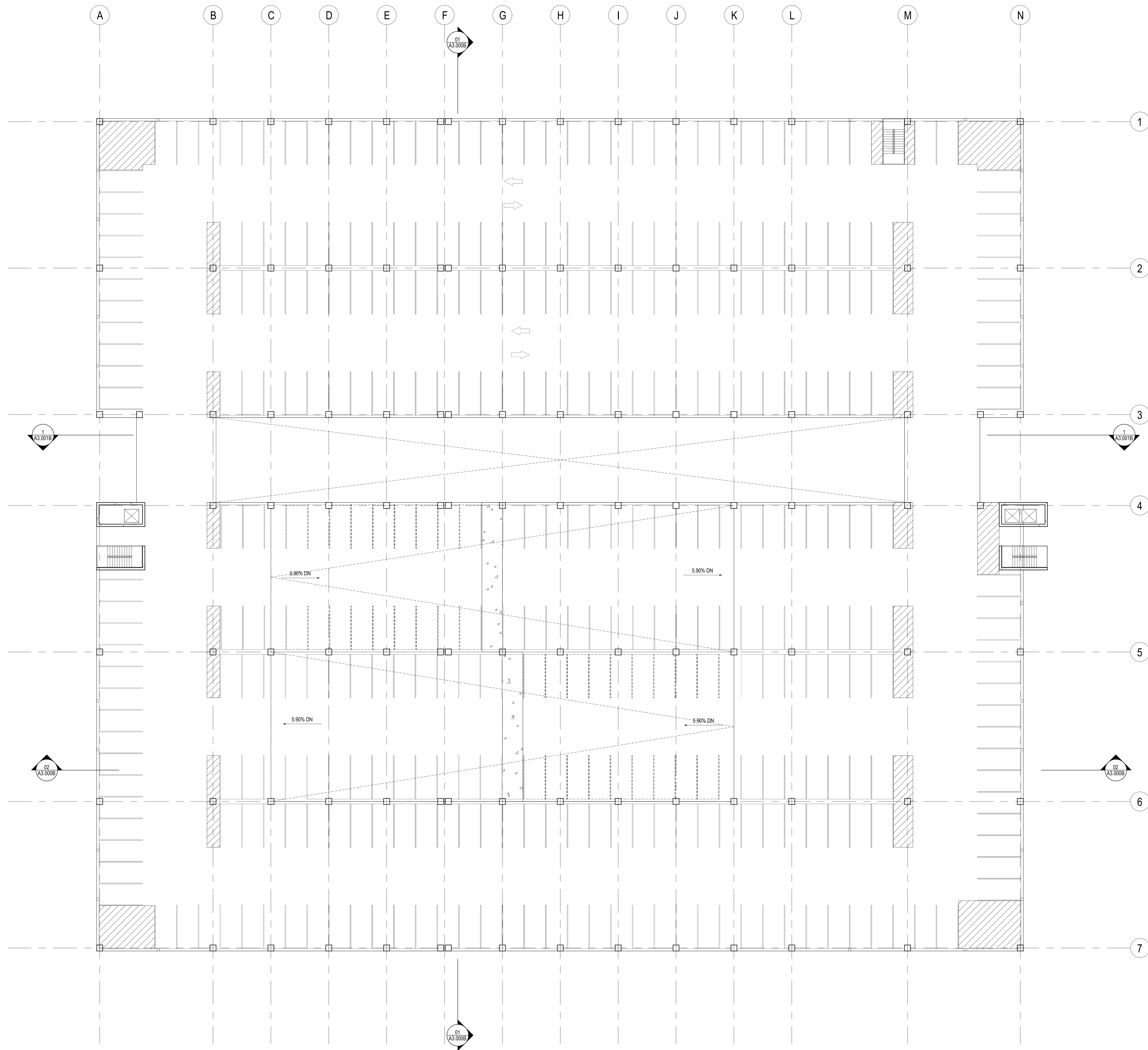
As indicated

Ref North



**A1.102B**





SHEET NOTES

GENERAL NOTES

- A. RE: G0 SHEET SERIES FOR LEGENDS, SYMBOLS AND ABBREVIATIONS.
- B. RE: G1 SHEET SERIES FOR CODE ANALYSIS RELATED TO PROJECT.
- C. ALL PARTITIONS TO BE TYPE 'XXX' UNO. ALL FLURRED-OUT PARTITIONS TO BE TYPE 'XXX' UNO. RE: A0.300 SERIES FOR PARTITION TYPES AND DETAILS.
- D. DOOR NUMBERS ARE THE SAME AS THE ROOM INTO WHICH THEY SWING. MULTIPLE DOORS INTO A SINGLE ROOM HAVE AN ALPHABETICAL DESIGNATION. RE: A0.400 FOR DOOR SCHEDULE AND TYPES.
- E. ALL PARTITIONS AT THE WINDOW WALL ARE CENTERED ON EITHER COLUMNS OR WINDOW MULLIONS UNO.
- F. COORDINATE AND PROVIDE BLOCKING FOR MILLWORK AND ITEMS ATTACHED OR MOUNTED TO PARTITIONS OR CEILINGS.
- G. PARTITIONS ARE DIMENSIONED FROM FINISH FACE TO FINISH FACE UNO. MAINTAIN DIMENSIONS MARKED 'CLEAR'. ALLOW FOR THICKNESSES AND MOUNTING OF FINISHES.

**UNIVERSITY OF ARKANSAS**  
68 S RAZORBACK RD, FAYETTEVILLE, ARKANSAS 72701, UNITED STATES

  
UNIVERSITY OF ARKANSAS

**Gensler**  
5005 Greenville Avenue  
Dallas, TX 75206  
United States

Tel: 214.273.1500  
Fax: 214.273.1505

△	Date	Description
---	------	-------------

Seal / Signature

**PRELIMINARY**  
THESE DOCUMENTS ARE INCOMPLETE, AND ARE RELEASED FOR INTERIM REVIEW ONLY. THEY ARE NOT INTENDED FOR REGULATORY APPROVAL, PERMIT, OR CONSTRUCTION PURPOSES.

ARCHITECT'S NAME  
ARKANSAS REGISTERED ARCHITECT: LICENSE #  
XXXXXXX

01/23/23

Project Name  
**RAZORBACK ROAD PARKING GARAGE**

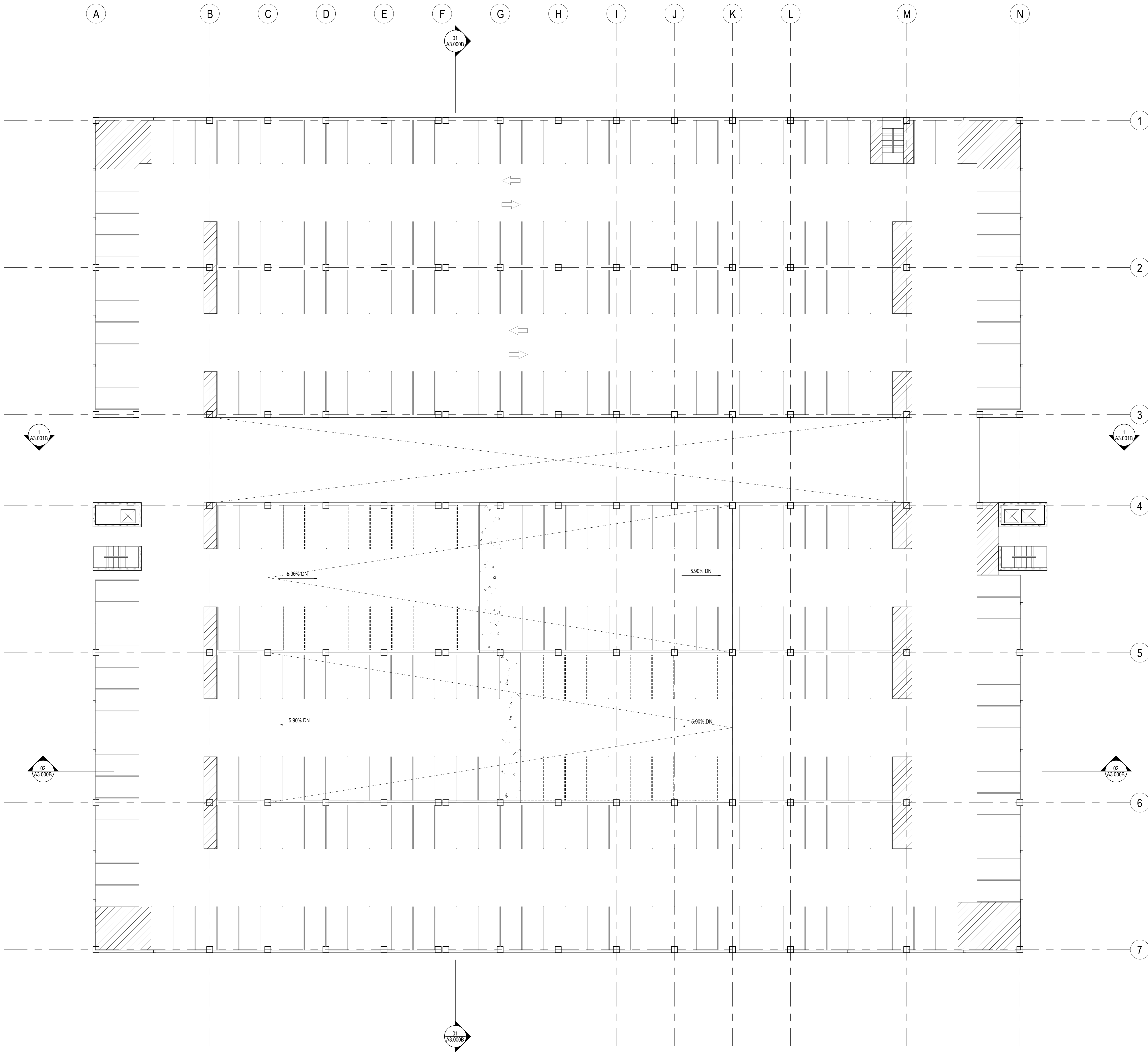
Project Number  
**122.0144.000**

Description  
**CONSTRUCTION PLAN - LEVEL 03 - BREEZEWAY**

Scale  
As indicated

Ref North  


**A1.103B**



SHEET NOTES

GENERAL NOTES

- A. RE: G0 SHEET SERIES FOR LEGENDS, SYMBOLS AND ABBREVIATIONS.
- B. RE: G1 SHEET SERIES FOR CODE ANALYSIS RELATED TO PROJECT.
- C. ALL PARTITIONS TO BE TYPE 'XXX' UNO. ALL FLURRED-OUT PARTITIONS TO BE TYPE 'XXX' UNO. RE: A0.300 SERIES FOR PARTITION TYPES AND DETAILS.
- D. DOOR NUMBERS ARE THE SAME AS THE ROOM INTO WHICH THEY SWING. MULTIPLE DOORS INTO A SINGLE ROOM HAVE AN ALPHABETICAL DESIGNATION. RE: A0.400 FOR DOOR SCHEDULE AND TYPES.
- E. ALL PARTITIONS AT THE WINDOW WALL ARE CENTERED ON EITHER COLUMNS OR WINDOW MULLIONS UNO.
- F. COORDINATE AND PROVIDE BLOCKING FOR MILLWORK AND ITEMS ATTACHED OR MOUNTED TO PARTITIONS OR CEILINGS.
- G. PARTITIONS ARE DIMENSIONED FROM FINISH FACE TO FINISH FACE UNO. MAINTAIN DIMENSIONS MARKED 'CLEAR'. ALLOW FOR THICKNESSES AND MOUNTING OF FINISHES.

**UNIVERSITY OF ARKANSAS**  
68 S RAZORBACK RD, FAYETTEVILLE, ARKANSAS 72701, UNITED STATES

  
UNIVERSITY OF ARKANSAS

**Gensler**  
5005 Greenville Avenue  
Dallas, TX 75206  
United States

Tel: 214.273.1500  
Fax: 214.273.1505

△	Date	Description
---	------	-------------

Seal / Signature

**PRELIMINARY**  
THESE DOCUMENTS ARE INCOMPLETE, AND ARE RELEASED FOR INTERIM REVIEW ONLY. THEY ARE NOT INTENDED FOR REGULATORY APPROVAL, PERMIT, OR CONSTRUCTION PURPOSES.

ARCHITECT'S NAME  
ARKANSAS REGISTERED ARCHITECT: LICENSE #  
XXXXXXXXXX

01/23/23

Project Name

RAZORBACK ROAD  
PARKING GARAGE

Project Number

122.0144.000

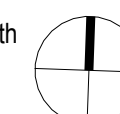
Description

CONSTRUCTION PLAN - LEVEL 04 -  
BREEZEWAY

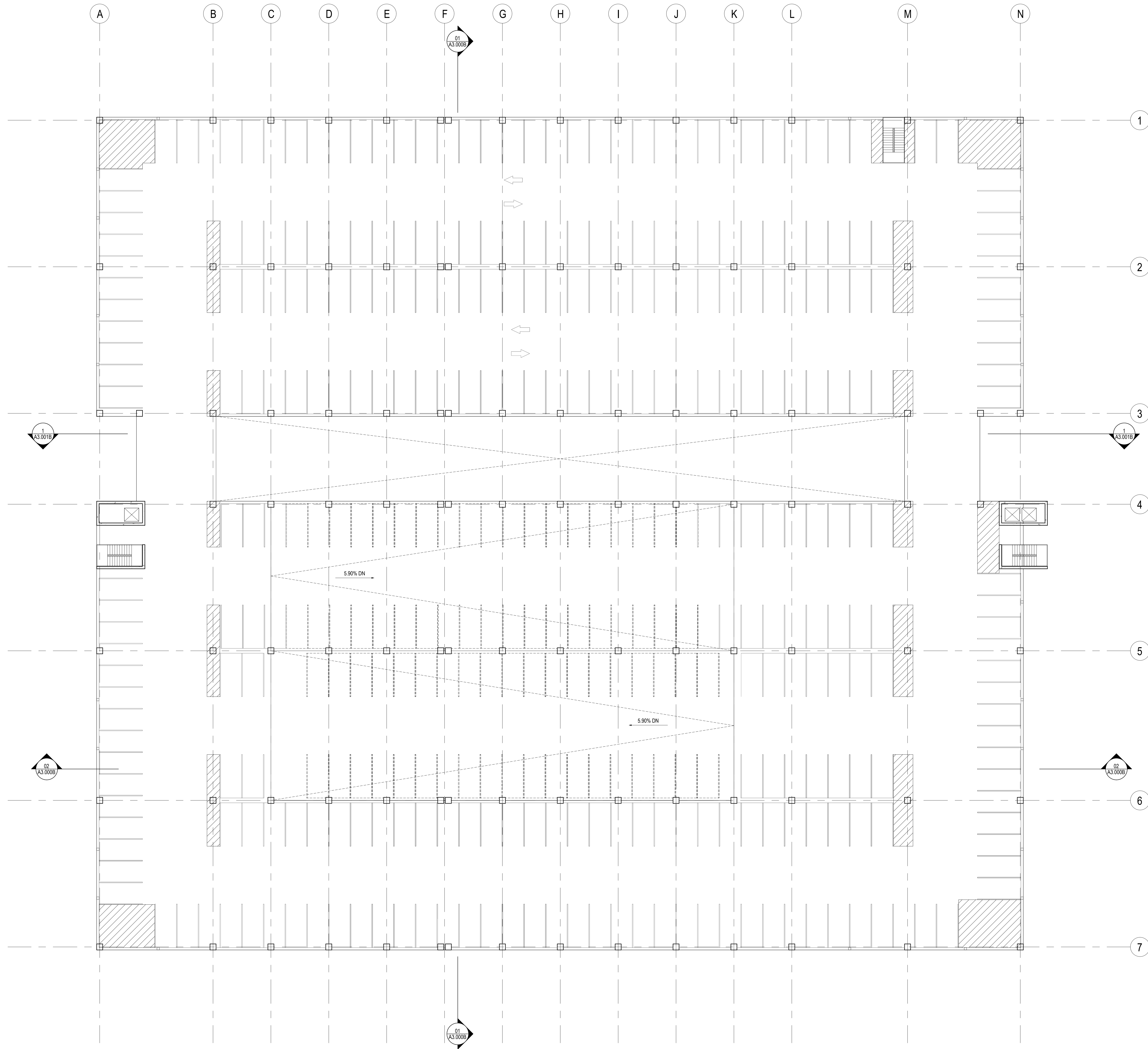
Scale

As indicated

Ref North



**A1.104B**



SHEET NOTES

**UNIVERSITY OF ARKANSAS**  
68 S RAZORBACK RD, FAYETTEVILLE, ARKANSAS 72701, UNITED STATES

  
UNIVERSITY OF ARKANSAS

**Gensler**  
5005 Greenville Avenue  
Dallas, TX 75206  
United States

Tel: 214.273.1500  
Fax: 214.273.1505

GENERAL NOTES

- A. RE: G0 SHEET SERIES FOR LEGENDS, SYMBOLS AND ABBREVIATIONS.
- B. RE: G1 SHEET SERIES FOR CODE ANALYSIS RELATED TO PROJECT.
- C. ALL PARTITIONS TO BE TYPE "XXX" UNO. ALL FLURRED-OUT PARTITIONS TO BE TYPE "XXX" UNO. RE: A0.300 SERIES FOR PARTITION TYPES AND DETAILS.
- D. DOOR NUMBERS ARE THE SAME AS THE ROOM INTO WHICH THEY SWING. MULTIPLE DOORS INTO A SINGLE ROOM HAVE AN ALPHABETICAL DESIGNATION. RE: A0.400 FOR DOOR SCHEDULE AND TYPES.
- E. ALL PARTITIONS AT THE WINDOW WALL ARE CENTERED ON EITHER COLUMNS OR WINDOW MULLIONS UNO.
- F. COORDINATE AND PROVIDE BLOCKING FOR MILLWORK AND ITEMS ATTACHED OR MOUNTED TO PARTITIONS OR CEILINGS.
- G. PARTITIONS ARE DIMENSIONED FROM FINISH FACE TO FINISH FACE UNO. MAINTAIN DIMENSIONS MARKED "CLEAR". ALLOW FOR THICKNESSES AND MOUNTING OF FINISHES.

△	Date	Description
---	------	-------------

Seal / Signature

**PRELIMINARY**  
THESE DOCUMENTS ARE INCOMPLETE, AND ARE RELEASED FOR INTERIM REVIEW ONLY AND ARE NOT INTENDED FOR REGULATORY APPROVAL, PERMIT, OR CONSTRUCTION PURPOSES.

ARCHITECT'S NAME  
ARKANSAS REGISTERED ARCHITECT. LICENSE #  
XXXXXXX

01/23/23

Project Name

RAZORBACK ROAD  
PARKING GARAGE

Project Number

122.0144.000

Description

CONSTRUCTION PLAN - LEVEL 05 -  
BREEZEWAY

Scale

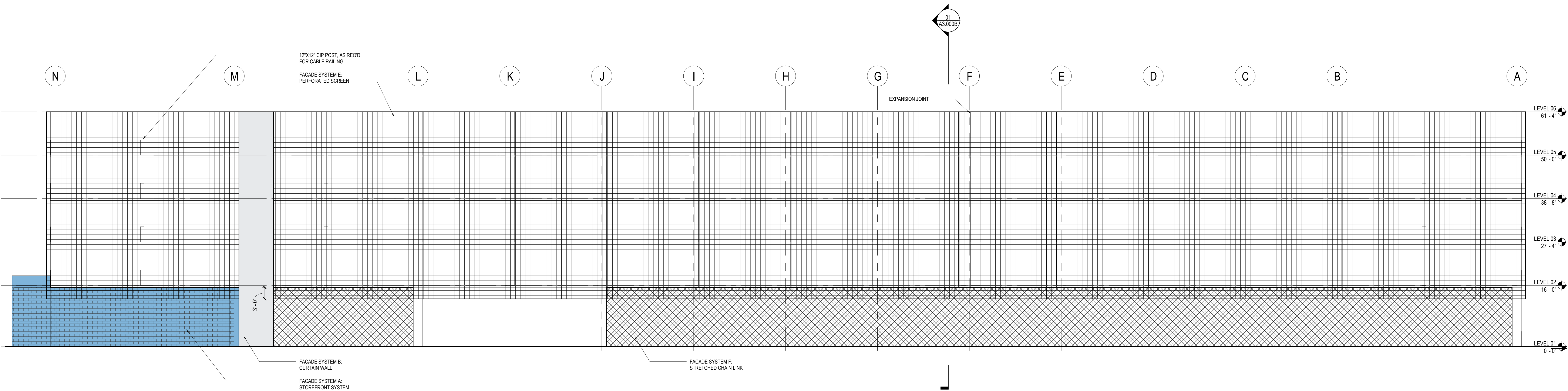
As indicated

Ref North



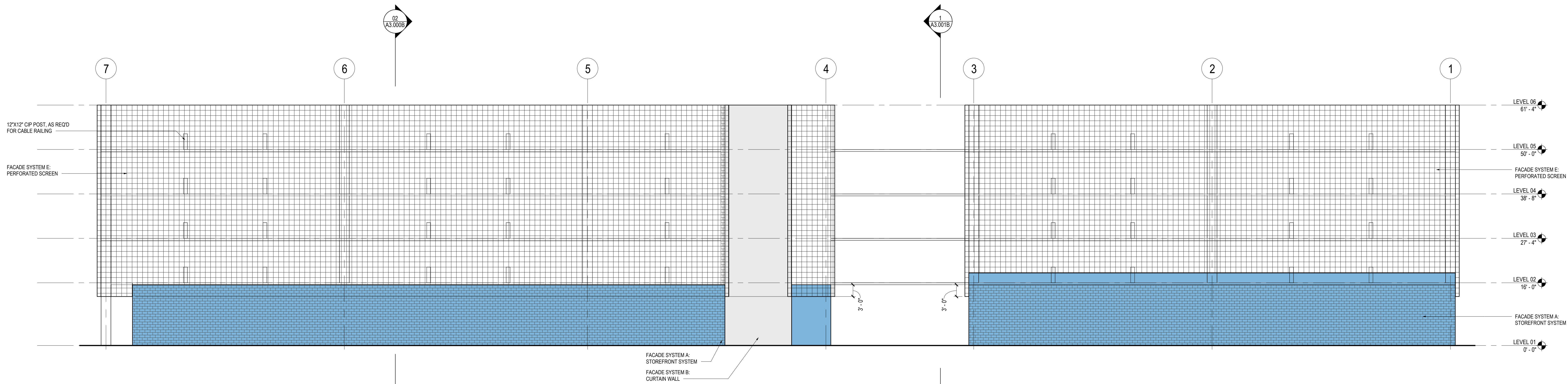
KEY PLAN






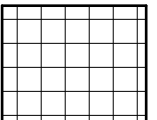
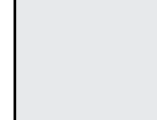
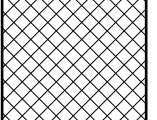
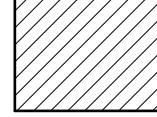
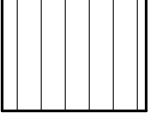

01 NORTH ELEVATION - BREEZEWAY  
SCALE: 3/32" = 1'-0"

REF: 01 / A1.101B



02 EAST ELEVATION - BREEZEWAY  
SCALE: 3/32" = 1'-0"

REF: 01 / A1.101B

FACADE LEGEND	
 FACADE SYSTEM A: STOREFRONT GLASS	 FACADE SYSTEM E: PERFORATED PANELS
 FACADE SYSTEM B: CURTAIN WALL	 FACADE SYSTEM F: STRETCHED CHAIN LINK
 FACADE SYSTEM C: ARTICULATED FACADE	 FACADE SYSTEM G: VERTICAL MTL. PANEL
 FACADE SYSTEM D: FLAT PANELS	

SHEET NOTES

GENERAL NOTES

UNIVERSITY OF  
ARKANSAS  
68 S RAZORBACK RD, FAYETTEVILLE,  
ARKANSAS 72701, UNITED STATES

  
UNIVERSITY OF  
ARKANSAS

Gensler

5005 Greenville Avenue  
Dallas, TX 75206  
United States

Tel: 214.273.1500  
Fax: 214.273.1505

△	Date	Description
---	------	-------------

Seal / Signature

PRELIMINARY  
THESE DOCUMENTS ARE INCOMPLETE, AND ARE RELEASED FOR  
INTERIM REVIEW ONLY AND ARE NOT INTENDED FOR REGULATORY  
APPROVAL, PERMIT, OR CONSTRUCTION PURPOSES  
ARCHITECT'S NAME  
ARKANSAS REGISTERED ARCHITECT: LICENSE #  
XXXXXXXXXX  
01/23/23

Project Name

RAZORBACK ROAD  
PARKING GARAGE

Project Number

122.0144.000

Description

BUILDING ELEVATIONS - BREEZEWAY

Scale

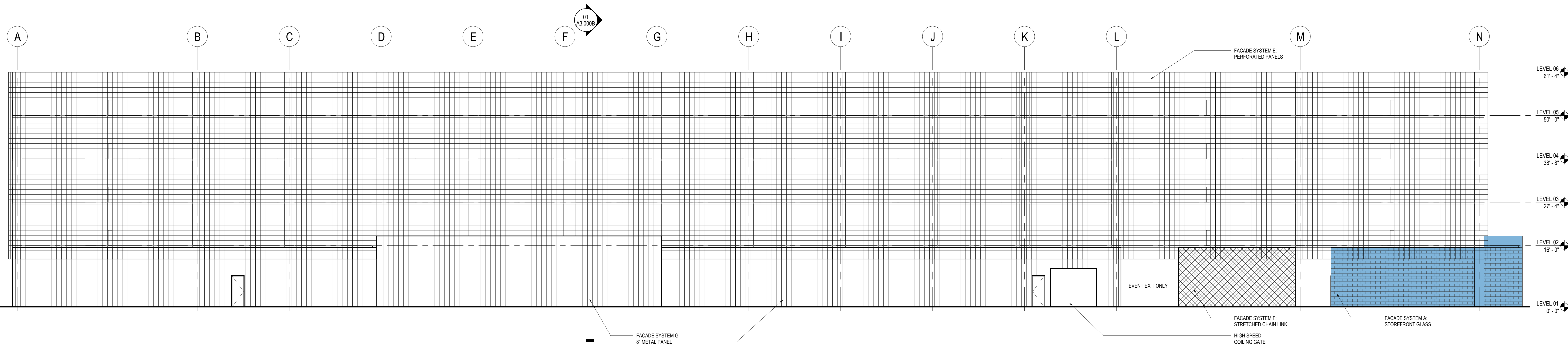
As indicated

Ref North



A2.000B

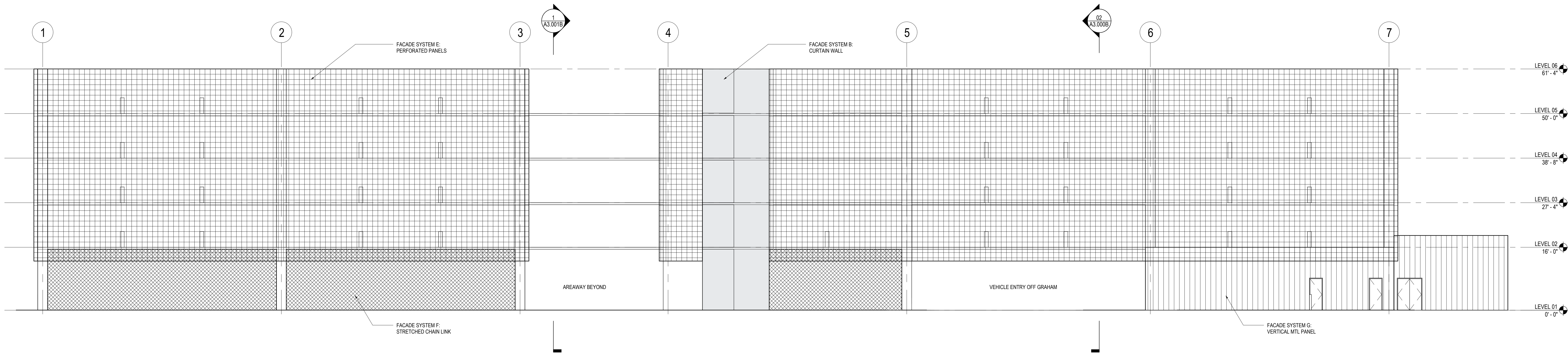




1 SOUTH ELEVATION - BREEZEWAY

SCALE: 3/32" = 1'-0"


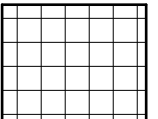
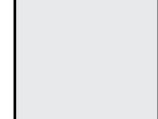
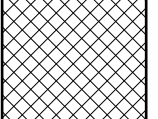
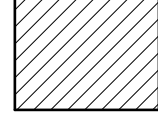
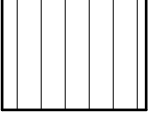

REF: 01 / A1.101B



2 WEST ELEVATION - BREEZEWAY

SCALE: 3/32" = 1'-0"

REF: 01 / A1.101B

FACADE LEGEND			
	FACADE SYSTEM A: STOREFRONT GLASS		FACADE SYSTEM E: PERFORATED PANELS
	FACADE SYSTEM B: CURTAIN WALL		FACADE SYSTEM F: STRETCHED CHAIN LINK
	FACADE SYSTEM C: ARTICULATED FACADE		FACADE SYSTEM G: VERTICAL MTL. PANEL
	FACADE SYSTEM D: FLAT PANELS		

SHEET NOTES

GENERAL NOTES

KEY PLAN

UNIVERSITY OF ARKANSAS

68 S RAZORBACK RD., FAYETTEVILLE,  
ARKANSAS 72701, UNITED STATES



UNIVERSITY OF  
ARKANSAS

Gensler

5005 Greenville Avenue  
Dallas, TX 75206  
United States

Tel: 214.273.1500  
Fax: 214.273.1505

△	Date	Description
---	------	-------------

Seal / Signature

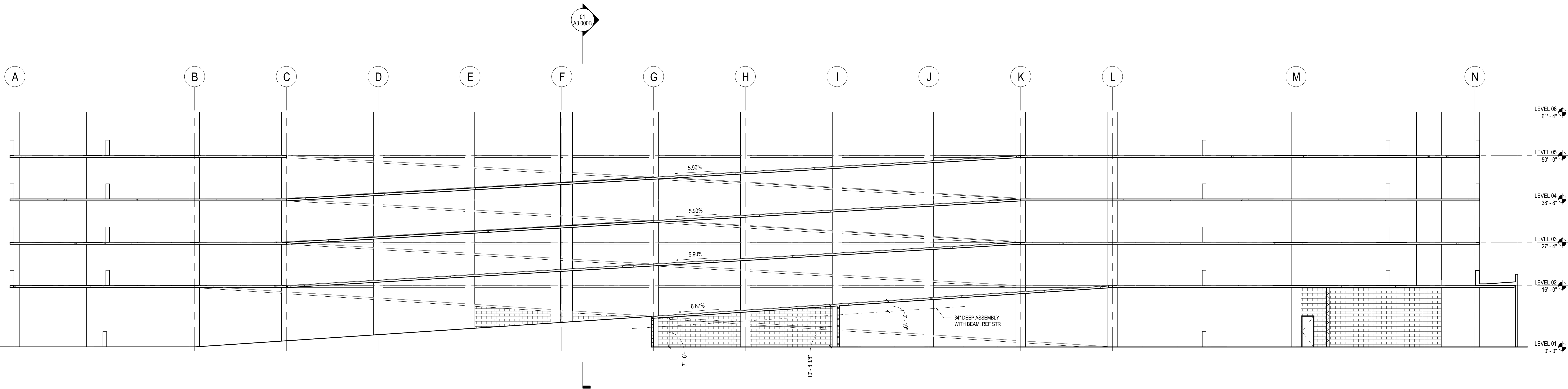
**PRELIMINARY**  
THESE DOCUMENTS ARE INCOMPLETE, AND ARE RELEASED FOR  
INTERIM REVIEW ONLY AND ARE NOT INTENDED FOR REGULATORY  
APPROVAL, PERMIT, OR CONSTRUCTION PURPOSES  
ARCHITECT'S NAME  
ARKANSAS REGISTERED ARCHITECT: LICENSE #  
XXXXXXXXXX  
01/23/23

Project Name  
**RAZORBACK ROAD  
PARKING GARAGE**  
Project Number  
**122.0144.000**  
Description  
**BUILDING ELEVATIONS - BREEZEWAY**

Scale  
As indicated  
Ref North

A2.001B

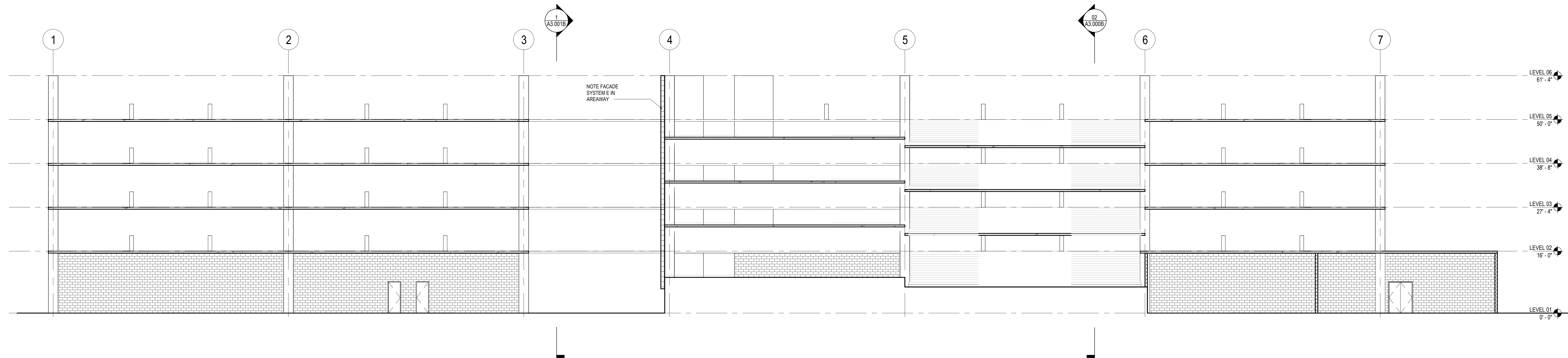




02 EAST/WEST SECTION - BREEZEWAY

SCALE: 3/32" = 1'-0"


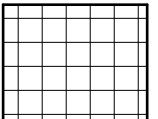
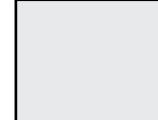
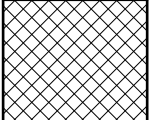
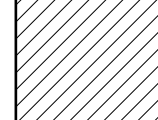
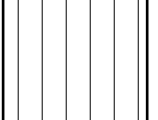
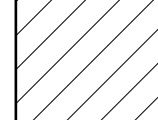
REF: 01 / A1.101B



01 NORTH/SOUTH SECTION - BREEZEWAY

SCALE: 3/32" = 1'-0"

REF: 01 / A1.101B

FACADE LEGEND	
 FACADE SYSTEM A: STOREFRONT GLASS	 FACADE SYSTEM E: PERFORATED PANELS
 FACADE SYSTEM B: CURTAIN WALL	 FACADE SYSTEM F: STRETCHED CHAIN LINK
 FACADE SYSTEM C: ARTICULATED FACADE	 FACADE SYSTEM G: VERTICAL MTL. PANEL
 FACADE SYSTEM D: FLAT PANELS	

SHEET NOTES

GENERAL NOTES

KEY PLAN

Date	Description
------	-------------

Seal / Signature

**PRELIMINARY**  
THESE DOCUMENTS ARE INCOMPLETE, AND ARE RELEASED FOR  
INTERIM REVIEW ONLY AND ARE NOT INTENDED FOR REGULATORY  
APPROVAL, PERMIT, OR CONSTRUCTION PURPOSES  
ARCHITECT'S NAME  
ARKANSAS REGISTERED ARCHITECT LICENSE #  
XXXX/XXXX  
01/23/23

Project Name  
**RAZORBACK ROAD  
PARKING GARAGE**

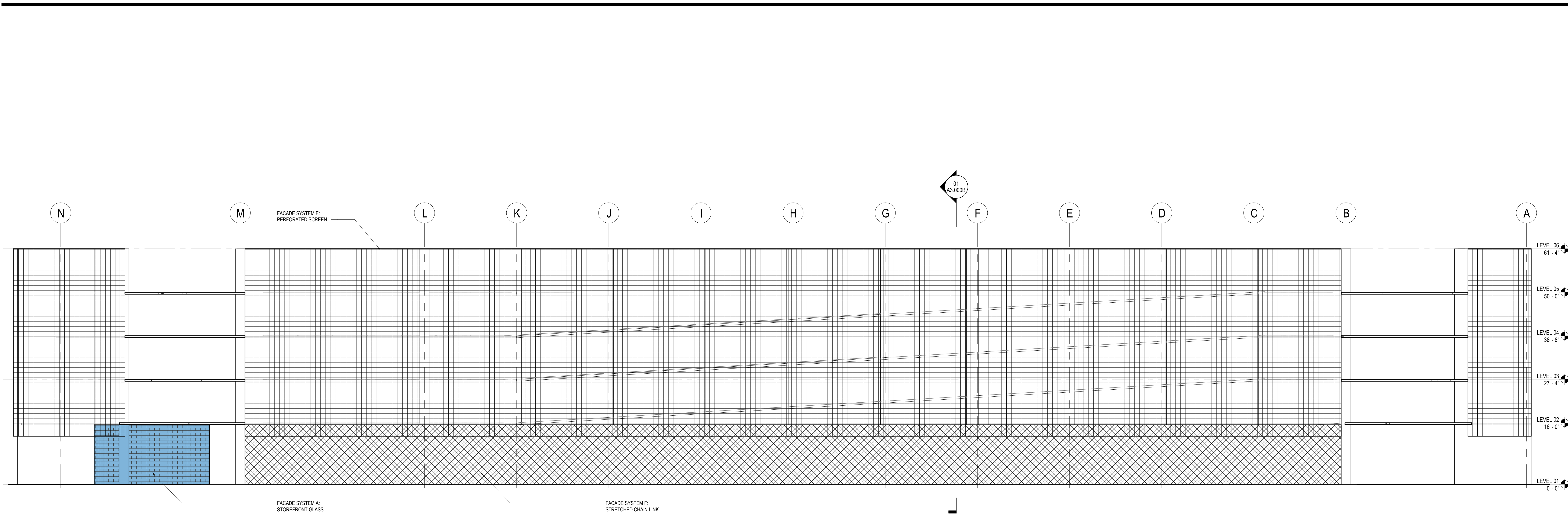
Project Number  
**122.0144.000**

Description  
**OVERALL BUILDING SECTIONS -  
BREEZEWAY**

Scale  
As indicated

Ref North  



1 EAST/WEST PASSAGEWAY SECTION - BREEZEWAY  
SCALE: 3/32" = 1'-0"

REF: 01 / A1.01B

SHEET NOTES

GENERAL NOTES

UNIVERSITY OF  
ARKANSAS

68 S RAZORBACK RD, FAYETTEVILLE,  
ARKANSAS 72701, UNITED STATES



UNIVERSITY OF  
ARKANSAS

Gensler

5005 Greenville Avenue  
Dallas, TX 75206  
United States

Tel: 214.273.1500  
Fax: 214.273.1505

△	Date	Description
---	------	-------------

Seal / Signature

**PRELIMINARY**  
THESE DOCUMENTS ARE INCOMPLETE, AND ARE RELEASED FOR  
INTERIM REVIEW ONLY AND ARE NOT INTENDED FOR REGULATORY  
APPROVAL, PERMIT, OR CONSTRUCTION PURPOSES.  
ARCHITECT'S NAME  
ARKANSAS REGISTERED ARCHITECT: LICENSE #  
XXXXXXXXXX  
01/23/23

Project Name

RAZORBACK ROAD  
PARKING GARAGE

Project Number

122.0144.000

Description

OVERALL BUILDING SECTIONS -  
BREEZEWAY

Scale

As indicated

Ref North



A3.001B